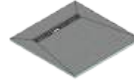


30mm Height 600mm Linear Drain Shower Trays

(Requires fitting kit - to be purchased separately)

Parts Supplied

Description	Qty
Shower Tray	1



Parts Supplied (Fitting Kit)

Description	Qty
Shower Drain Base	1
Shower Drain Angled Coupler	1
Shower Drain Reducer	1
Shower Drain Stop End	1
Shower Drain Vertical Waste Elbow	1
Shower Drain Internal Bowl	1
Shower Drain Top	1
Shower Drain Bolts	4
Shower Drain Finishing Grate	1

Description	Qty
Fix-KST Adhesive Bag (5kg)	1
Fix-MD Adhesive Tube (310ml)	1
Waterproofing Tape (5m)	1
Pro-SEAL Pre-MIX 0.5L	1
Waterproofing Internal Corner	2
Wood Floor Primer (250ml)	1
Protective Gloves	1
Disposable Tiling Aid	1

Tools required (not supplied)

- Tools required (not supplied)
- Paint Brush (Wood Floors Only)
- Notched Adhesive Trowel
- Tape Measure
- Pencil
- Straight Edge
- Hard Point Saw
- Junior Hacksaw
- Protective Gloves
- Eye Protection
- Breathing Protection
- Bucket
- Level
- Solvent Weld Adhesive
- Sealant Gun
- Measuring Jug

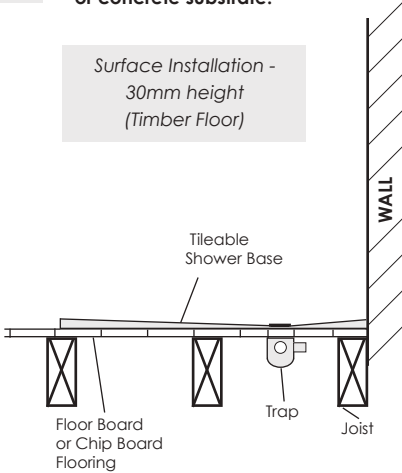
Before You Start

THIS PRODUCT CAN BE INSTALLED IN THE FOLLOWING THREE WAYS

A

30mm high tiled shower base installed onto an existing timber or concrete substrate.

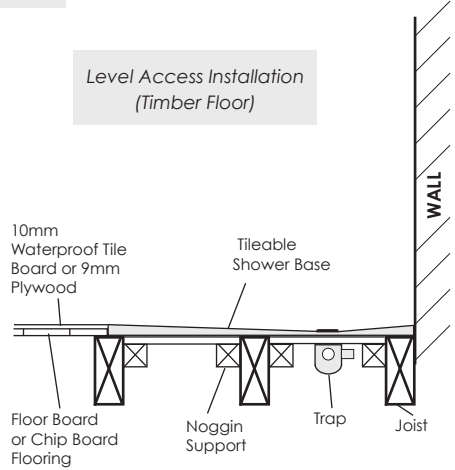
*Surface Installation -
30mm height
(Timber Floor)*



B

Level access wetroom tiled shower tray built into existing flooring.

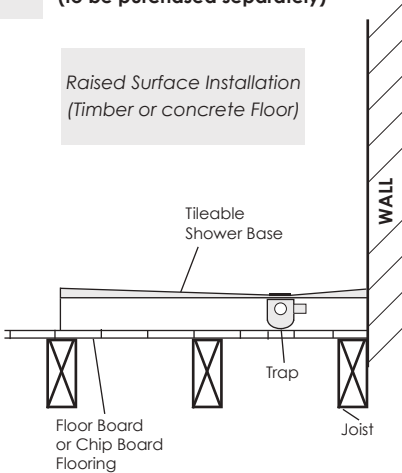
*Level Access Installation
(Timber Floor)*



C

Installation using a 90mm substrate element (to be purchased separately)

*Raised Surface Installation
(Timber or concrete Floor)*



Please decide how you are installing your tray and follow either section A, page 3, section B, page 8 or section C, page 15 in the following instructions

Important Information

PLEASE READ THESE INSTRUCTIONS THOROUGHLY BEFORE STARTING INSTALLATION.

- ALWAYS ENSURE THE HOLE CUT FOR THE SHOWER DRAIN BASE IS CUT TO THE SIZE ADVISED IN THE INSTRUCTIONS
- DO NOT PLACE STEP LADDERS OR OTHER HEAVY ITEMS ONTO THE SHOWER TRAY PRIOR TO TILING AS THIS COULD PUNCH A HOLE THROUGH THE SURFACE
- WHEN DRILLING OR FIXING INTO WALLS OR FLOORS IT IS ESSENTIAL TO CHECK FOR PIPES AND WIRES BEFORE STARTING
- If your product has slightly damaged edges there is no need to return the product. These can easily be repaired and most minor damage will naturally be covered during installation
- Should a repair be needed that won't be naturally covered, the repair should be sealed in the same way as sealing a joint with Waterproofing Tape and Pro-DRY Tape Sealer
- When ready to start make sure all required tools are to hand and that the installation area is clean and dry.

Site Preparation

All floor types need to be clean, dry and dust free.

All floor types need to be as flat and level as possible.

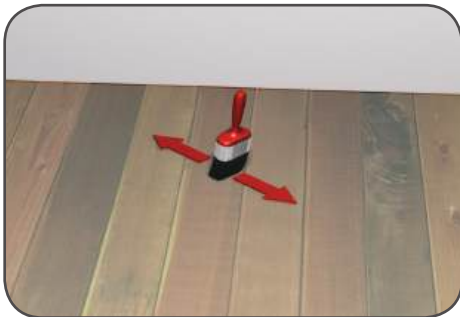
Prior to installation you will need to have access to a wastepipe in the correct position. Please ensure the wastepipe is accessible and any alterations to the floor are completed prior to installation.

If running pipe work below the floor, the waste pipe must run in the same direction as the floor joists so please check the joists before starting installation.

Section A

Installation Type **A**

Surface installation (onto timber floor)



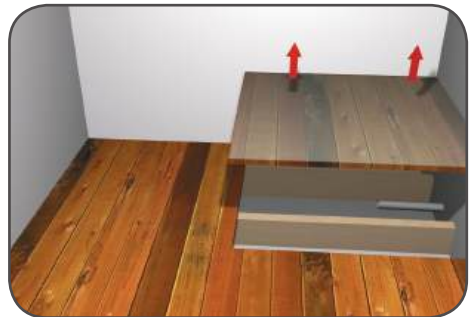
Step 1

(wood floors only)

If you are installing onto a wooden floor, make sure that the existing floor boards or sheets are fully secured down and as level and flat as possible. Paint the floor area where the shower will sit with wood floor primer.

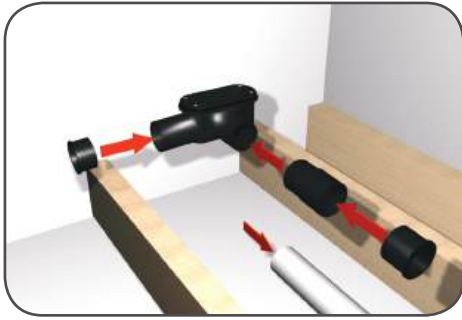
PVA MUST NOT BE USED IN PLACE OF THE WOOD FLOOR PRIMER.

Leave to dry for at least 2 hours.



Step 2

Remove flooring as necessary to carry out works to the wastepipe. Please note that if there is a joint in the way of the Shower Tray you will need to consult a professional joiner or structural engineer for advice.



Step 3

Note: All solvent joints should be cleaned with an appropriate solvent weld cleaner prior to using solvent adhesive.

The waste has two outlets for multi direction waste flow. The outlet running at a ninety degree angle from the waste has a zero degree fall; this is to facilitate the fitting of the vertical waste elbow. If you plan to run the waste horizontally from this outlet you MUST fit the angled coupler supplied with the linear drain to achieve the required waste fall. Clean with Spread solvent weld adhesive around the outside of the coupler and push into the linear drain outlet with a twisting action, ensuring that the coupler is fit with the fall in the correct orientation by ensuring that the angled coupler is fitted with the 'up' text facing upwards.

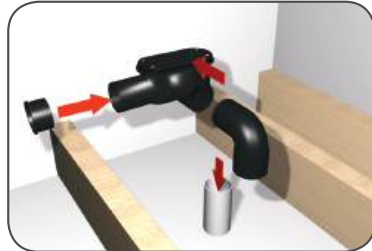
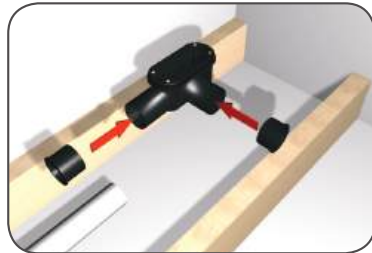
IMPORTANT: As the drain has two outlets, it is important that the outlet not being used is capped off using the stop end supplied. Spread solvent weld adhesive around the outside of the stop end and push into the linear drain outlet with a twisting action.

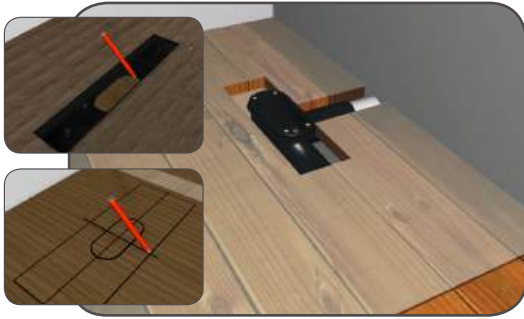
The linear drain is also supplied with a 2" to 1 1/2" reducer for instances where you need to reduce to 1 1/2" waste pipe. Spread solvent weld adhesive around the outside of the reducer and push into the remaining linear drain outlet with a twisting action. If you have 2" waste pipe this part can be discarded and simply fit your waste pipe to the linear drain using solvent waste adhesive in the same manner as above.

Once any solvent welds have set, pour water down the drain to check that the waste is not blocked and that there are no leaks.

Note: The typical linear drain flow rate figure (42L/min) is based on using 2" waste pipe; by reducing the waste pipe diameter this will have an adverse affect on the flow rate achieved.

For water to drain away properly, the waste pipe must have a fall of 3cm per metre.

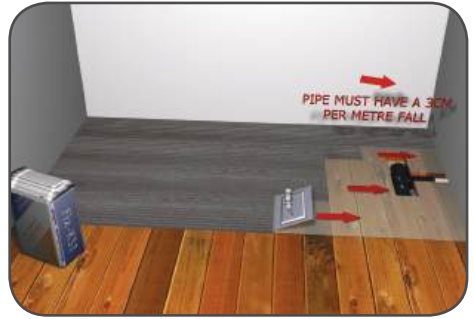




Step 4

Measure the shower drain base position on the floor and mark this onto the relevant flooring. Using a jigsaw cut a **615mm x 90mm** hole in the floorboard, making sure the drain's centre is in the middle of the cut-out, so that the shower drain base and shower drain connector will be exposed through the new floor.

Using a jigsaw cut a hole in the plywood so that the shower drain base and shower drain connector will be exposed through the new floor.



Step 5

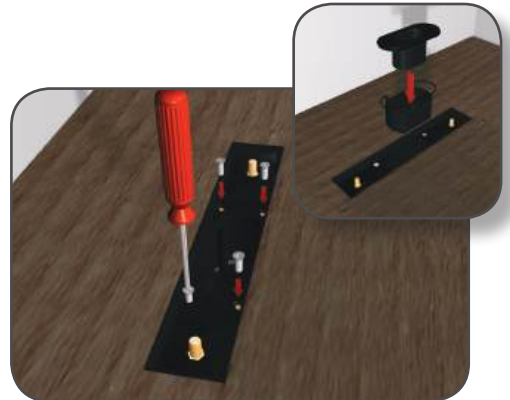
Put on the protective gloves and wear eye and breathing protection.

Mix a bag of Fix-KST adhesive with water, to the directions on the back of the bag, in a clean bucket which will give the adhesive a stiff consistency. Spread the Fix-KST adhesive onto the floor of the shower position and drag the notched adhesive trowel across the surface. The notched adhesive trowel will make a ribbed pattern which will leave just the right amount of adhesive on the floor.



Step 6

Apply a wavy line of Fix-MD adhesive across the edge of the shower tray base. Place the shower tray into position and bed down onto the adhesive cement. Check that the shower tray is level in both directions using a suitable level.



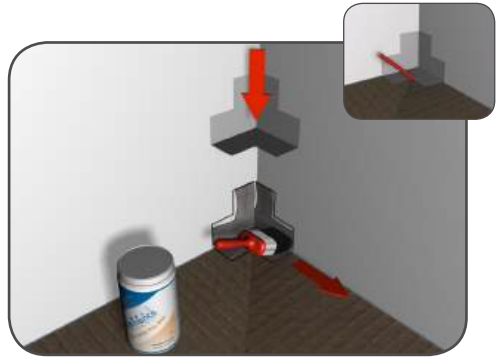
Step 7

Line up the linear drain bowl with the drain top pre-fitted within the shower tray and connect the two together using the four bolts provided and a suitable cross headed screwdriver. Ease the shower drain internal bowl into place then ease in the drain top as shown applying a little gentle pressure so that it seats correctly.



Step 8

From a roll of waterproofing tape cut to suit the width of the shower tray and the length of the shower tray.

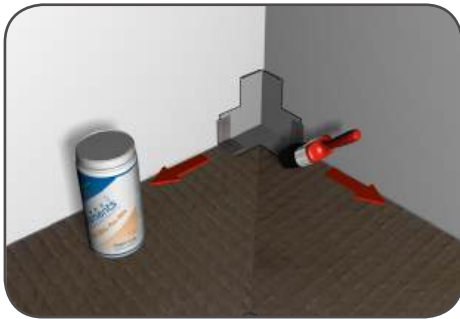


Step 9

Temporarily place a waterproofing internal corner into position and mark around it with a pencil. Once marked it can be removed. This is to show where you need to apply Pro-SEAL tape sealer. Repeat for any other corners.

Put on the protective gloves and wear eye and breathing protection.

Using Pro-SEAL Pre-MIX tape sealer and a paintbrush, apply a thin layer of Pro-SEAL tape sealer to the internal corners of the shower tray, slightly bigger than the pencil line marked earlier.



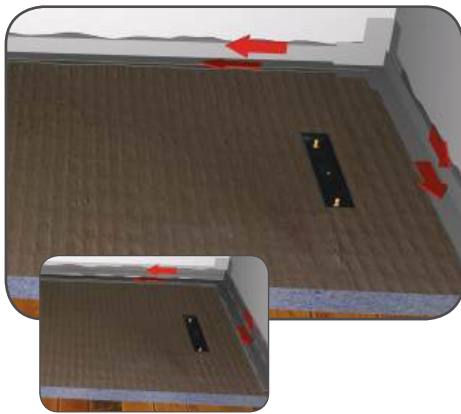
Step 10

Place the waterproofing internal corners into the internal corners of the shower tray and push firmly into the Pro-SEAL tape sealer. Apply a further thin layer of Pro-SEAL tape sealer over the edges of the waterproofing internal corners.



Step 11

Where the shower tray meets the wall apply a thin layer of Pro-SEAL tape sealer to the shower area and the adjoining wall approximately 60mm wide on both.



Step 12

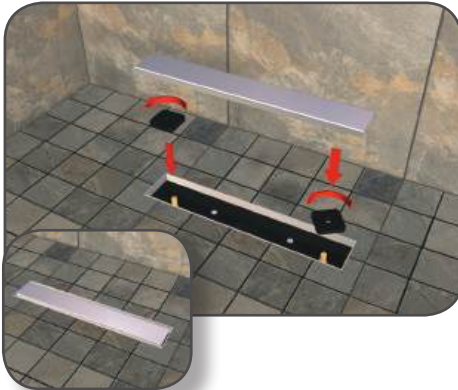
Place the strips of waterproofing tape previously cut in step 8 along the edges of the shower tray, folding half up the wall and half on the shower tray as you go. Press firmly into the Pro-SEAL tape sealer and the tape should also overlap the waterproofing internal corners. When you have finished you can remove the protective gloves and eye and breathing protection.

Step 13

IMPORTANT! Apply a further thin layer of Pro-SEAL Tape Sealer over the tape & corners to fully impregnate the tape.

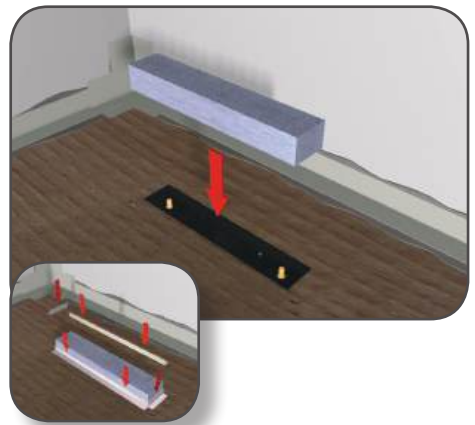
Step 14

Leave to set for approximately 12 hours after which the tray is ready for tiling.



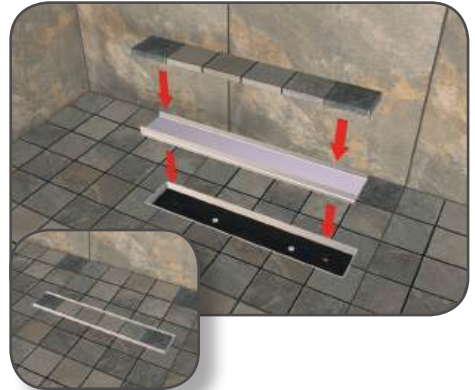
Step 16

The linear drain is supplied with 2 No. square black plastic height adjustment nuts. Screw these on to the protruding bolts pre-fitted within the linear drain and adjust to suit your thickness of tile and adhesive. The drain should aim to be fitted flush with the finish tile.



Step 15

Place the disposable tiling aid into the shower drain hole on the shower tray. The tiling aid provides the edge that needs to be tiled up to whilst protecting the drain from debris. At this stage we recommend fitting tile trim to create a clean finished edge for the waste cover.



Step 17 (Optional)

Various options are available to accessorise the linear drain including a tileable drain cover option and several finishes of toughened glass drain cover to give a more bespoke finish to your shower room. These are installed in the same way as above; just adjust the black plastic height adjustment nuts to suit. Leave for at least 24 hours before using the shower.

Section B

Installation Type **B**

Level Access installation (onto timber floor)



Step 1

Measure the entire floor area and plan the layout on a sheet of paper. Decide if any of the waterproof boards need to be cut and if they do, cut them now using a hard point saw. Lay the entire pack out across the floor area to check the fit. **DO NOT WALK ON OR STAND ANYTHING ON THE SHOWER TRAY OR WATERPROOF BOARDS AS THEY CAN EASILY BE DAMAGED AT THIS STAGE.** Carefully remove the waterproof boards and store somewhere safe.



Step 4

Before proceeding, check thoroughly for pipes and wires under the floor. Set the circular saw blade to a depth of 18mm, it may be necessary to increase the depth slightly if 18mm does not go right through the floor. As a safety precaution, we would recommend that the circular saw is plugged into an RCD protected socket. Using the circular saw cut along the lines that you have marked and remove the flooring and all nails or screws.

Step 2

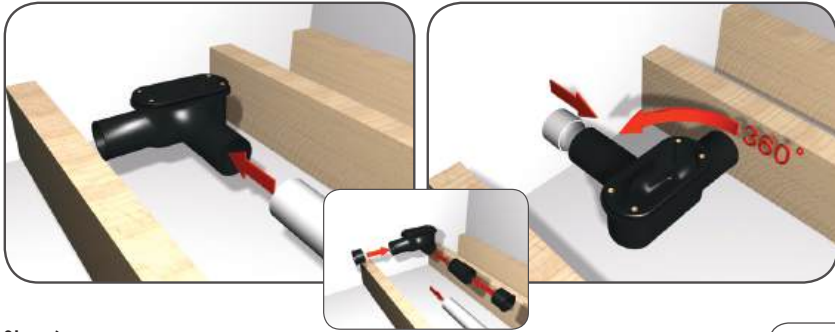
Mark the shower tray position onto the floor. Measure the position of the waste hole in the shower tray. Carefully remove the shower tray and store somewhere safe.

Step 3

From the nails or screws holding the existing flooring down, establish where the joists are. Where the edge of the shower tray runs across the joists, the floor cut line will be as marked in step 2. Where the edge of the shower tray runs in the same direction as the joists, mark the centre line of the first joist outside the shower area as you will need to remove the floor up to this line.

Step 5

Make sure that the remaining floor boards or sheets in the rest of the room are fully secured down and as level and flat as possible.



Step 6

Note: All solvent joints should be cleaned with an appropriate solvent weld cleaner prior to using solvent adhesive.

The waste has two outlets for multi direction waste flow. The outlet running at a ninety degree angle from the waste has a zero degree fall; this is to facilitate the fitting of the vertical waste elbow. If you plan to run the waste horizontally from this outlet you **MUST** fit the angled coupler supplied with the linear drain to achieve the required waste fall. Clean the joints and spread solvent weld adhesive around the outside of the coupler and push into the linear drain outlet with a twisting action, ensuring that the coupler fits with the fall in the correct orientation by ensuring that the angled coupler is fitted with the 'up' text facing upwards.

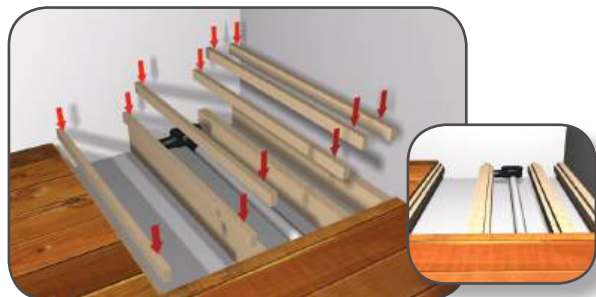
IMPORTANT: As the drain has two outlets, it is important that the outlet not being used is capped off using the stop end supplied. Spread solvent weld adhesive around the outside of the stop end and push into the linear drain outlet with a twisting action.

The linear drain is also supplied with a 2" to 1 ½" reducer for instances where you need to reduce to 1 ½" waste pipe. Spread solvent weld adhesive around the outside of the reducer and push into the remaining linear drain outlet with a twisting action. If you have 2" waste pipe this part can be discarded and simply fit your waste pipe to the linear drain using solvent waste adhesive in the same manner as above.

Once any solvent welds have set, pour water down the drain to check that the waste is not blocked and that there are no leaks.

Note: The typical linear drain flow rate figure (42L/min) is based on using 2" waste pipe; by reducing the waste pipe diameter this will have an adverse affect on the flow rate achieved. For water to drain away properly, the waste pipe must have a fall of 3cm per metre.





Step 7

All exposed joists will now need a noggin or batten running along the inside of the joist to accommodate the new plywood low level floor. Measure the length of the exposed joist taking into account any obstructions. Cut some timber batten to length and screw at approximately 150mm intervals to the inside of all joists 18mm below the top of the joists.

Step 8

Cut some 18mm plywood to fit between the joists on top of the noggin fitted in step 7.



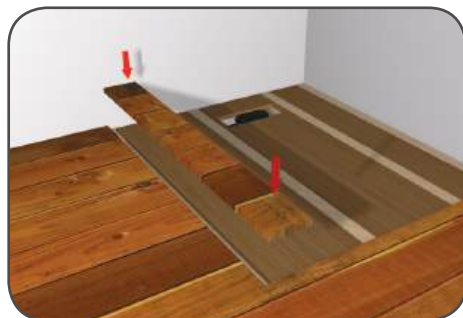
Step 9

Before proceeding, check thoroughly for pipes and wires.

Measure the shower drain base position on the floor and mark this onto the relevant piece of plywood.

Remove this piece of plywood, then using a jigsaw cut a **615mm x 90mm** hole in the plywood so that the shower drain base and shower drain connector will be exposed through the new floor. Make sure that the drain's centre is in the middle of the cut-out.

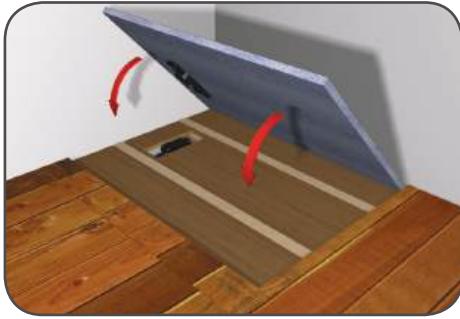
Check the position of any pipes or wires and mark these on top of the joist for reference. Lay the plywood into position and pilot drill and countersink making sure you avoid any pipes and wires marked on the joists. Fix the plywood on top of the timber battens with a suitable wood screw at approximately 150mm intervals.



Step 10

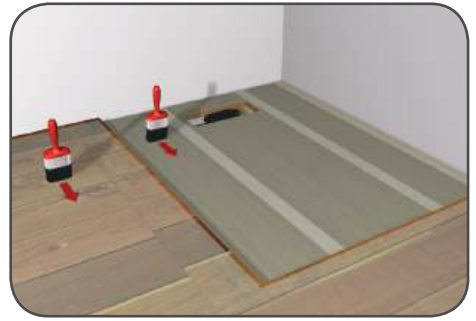
Before proceeding, check thoroughly for pipes and wires.

If you are left with a gap between the edge of the shower tray and the start of the original flooring, this should be filled with a piece of the flooring that you removed in step 4 and securely screwed down onto the new plywood.



Step 11

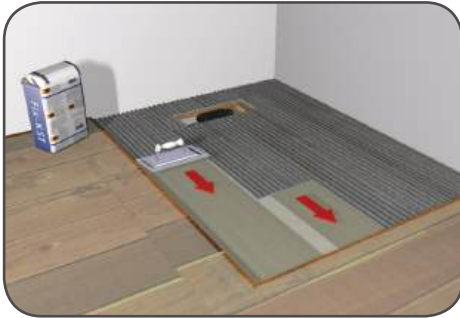
Lay the shower tray into the required position to check the fit of the shower drain base. Once you are happy with the fit, carefully remove the shower tray and store somewhere safe.



Step 12

Put on the protective gloves and wear eye and breathing protection.

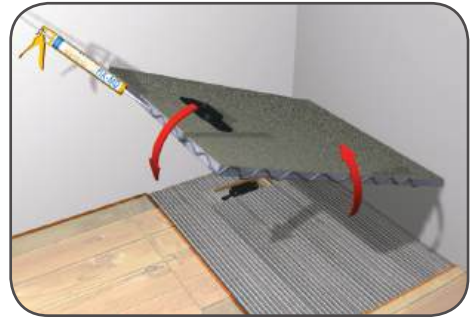
Paint the entire floor area including the new plywood with the wood floor primer. When you have finished you can remove the protective gloves and eye and breathing protection. Leave to dry for at least 2 hours.



Step 13

Put on the protective gloves and wear eye and breathing protection.

Mix some Fix-KST adhesive with water in a clean bucket in line with the directions stated on the bag. Where the shower tray will sit, spread the Fix-KST adhesive onto the floor and drag the notched adhesive trowel across the surface. The notched adhesive trowel will make a ribbed pattern which will leave just the right amount of adhesive on the floor.



Step 14

Squeeze the wavy line of FIX-MD adhesive across the edges that will meet a wall, then place the shower tray into position and bed down onto the adhesive. Check that the shower tray is level in both directions along the edge using a suitable level.



Step 15

Line up the linear drain bowl with the drain top pre-fitted within the shower tray and connect the two together using the four bolts provided and a suitable cross headed screwdriver.

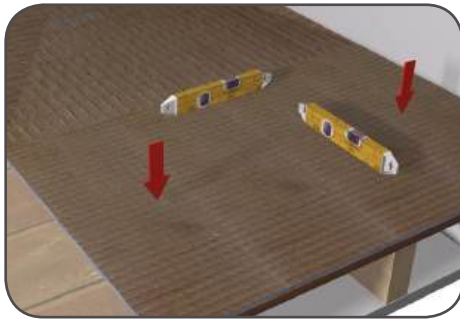


Step 16

Ease the shower drain internal bowl into the shower drain base. Ease the shower drain internal dome into the shower drain base.

NOTE

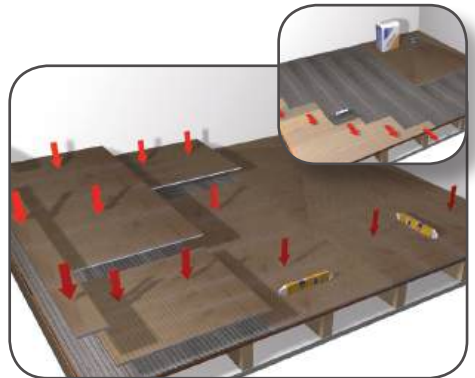
The remaining floor must now be covered in either 10mm waterproof tile board or 9mm plywood.



Step 17

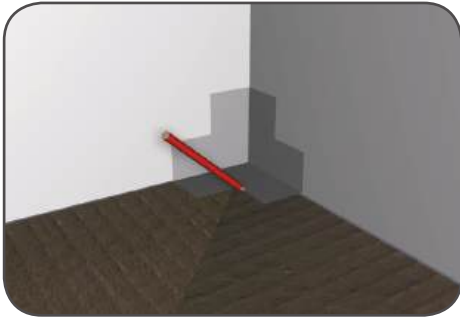
Place the first board into position and secure. Check that the waterproof board is level in both directions using a suitable level.

The floor is designed to be fitted flat and is fully waterproof however water will sit on a flat surface. If the floor immediately outside the showering area is likely to get wet, it is advisable to angle the first board slightly so that water will run back towards the drain.



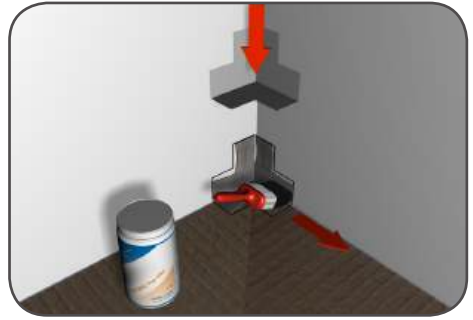
Step 18

Repeat steps 17 and 18 for the remaining boards. Leave to set for approximately 3 to 5 hours.



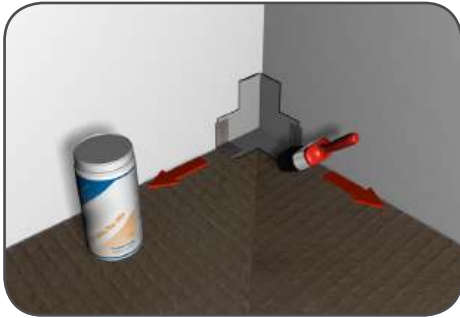
Step 19

Temporarily place the waterproofing internal corners into position and mark around them with a pencil. Once you have marked they can be removed. This is to show where you need to apply the Pro-SEAL tape sealer.



Step 20

Put on the protective gloves and wear eye protection. Using the Pro-SEAL Pre-MIX tape sealer and paintbrush, apply a thin layer of Pro-SEAL tape sealer to the internal corners of the shower area, slightly bigger than the pencil line marked in step 19.



Step 21

Place the waterproofing internal corners into the internal corners of the shower area and push firmly into the Pro-SEAL tape sealer. Apply a further thin layer of Pro-SEAL tape sealer over the edges of the waterproofing internal corners.



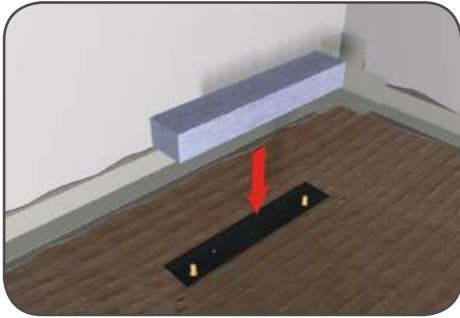
Step 22

Apply a thin layer of Pro-SEAL tape sealer to the shower area and the adjoining wall approximately 60mm wide on both. Apply a thin layer of Pro-SEAL tape sealer approximately 120mm across any joints and over all fixing plates.

NOTE

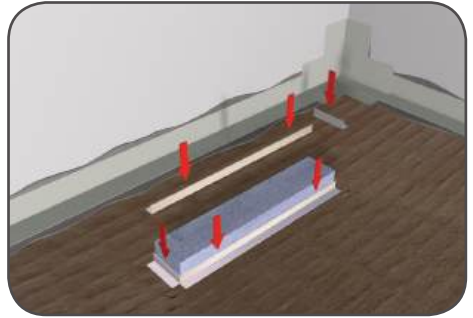
The rest of the room must now be waterproofed prior to tiling using either a waterproof membrane or waterproof tape on all joints.

Leave to set for approximately 3 to 5 hours after which the floor is ready for tiling



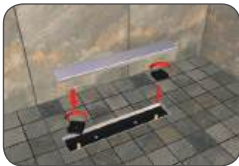
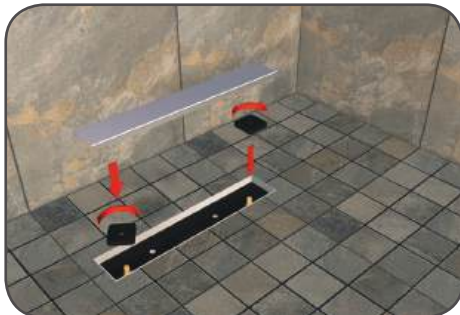
Step 23

Place the disposable tiling aid into the shower drain hole on the shower tray. The tiling aid provides the edge that needs to be tiled up to whilst protecting the drain from debris.



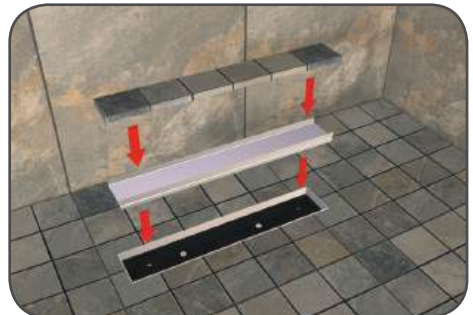
Step 24

At this stage we recommend fitting tile trim to create a clean finished edge for the waste cover.



Step 25

The linear drain is supplied with 2 No. square black plastic height adjustment nuts. Screw these on to the protruding bolts pre-fitted within the linear drain and adjust to suit your thickness of tile and adhesive. The drain should aim to be fitted flush with the finish tile.



Step 26 (Optional Extra)

Various options are available to accessorise the linear drain including a tileable drain cover option and several finishes of toughened glass drain cover to give a more bespoke finish to your shower room. These are installed in the same way as above; just adjust the black plastic height adjustment nuts to suit. Leave for at least 24 hours before using the shower.

Section C

Installation Type **C**

Fitting A Shower Tray and Substrate Element



Step 1

(wood floors only)

If you are installing onto a wooden floor, make sure that the existing floor boards or sheets are fully secured down and as level and flat as possible. Paint the floor area where the shower will sit with the wood floor primer.

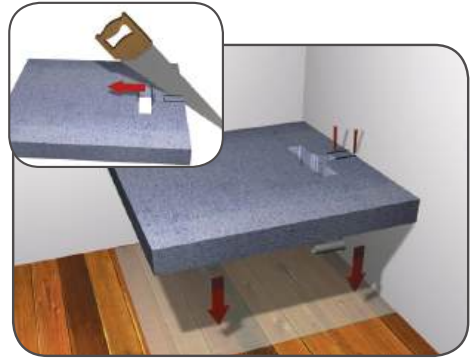
PVA MUST NOT BE USED IN PLACE OF THE WOOD FLOOR PRIMER.

Leave to dry for at least 2 hours.



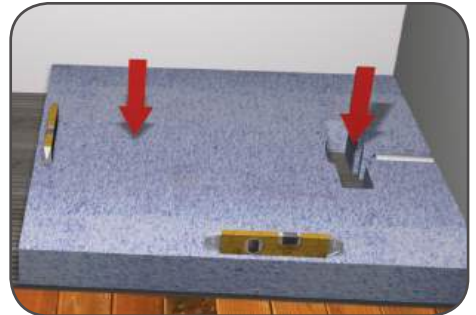
Step 3

Mix a bag of Fix-KST adhesive with water in a clean bucket in line with the directions stated on the bag. Spread the Fix-KST adhesive onto the floor of the shower position and drag the notched adhesive trowel across the surface. The notched adhesive trowel will make a ribbed pattern which will leave just the right amount of adhesive on the floor.



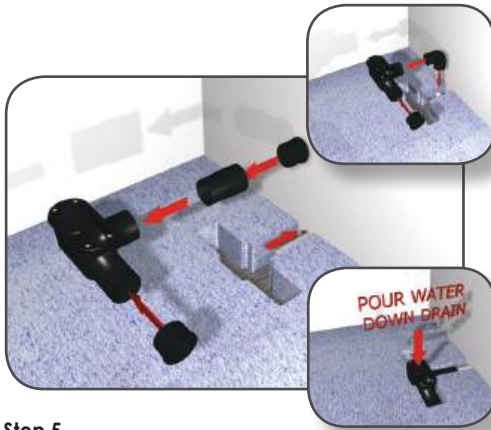
Step 2

The linear drain has two outlets to allow multi directional waste flow. First decide in which direction the waste pipe work needs to follow then cut a channel out of the substrate as applicable carefully with a hard point saw. Put on the protective gloves and wear eye and breathing protection.



Step 4

Place the shower tray base into position and bed down onto the adhesive cement. Check that the shower tray base is level in both directions using a suitable level.



Step 5

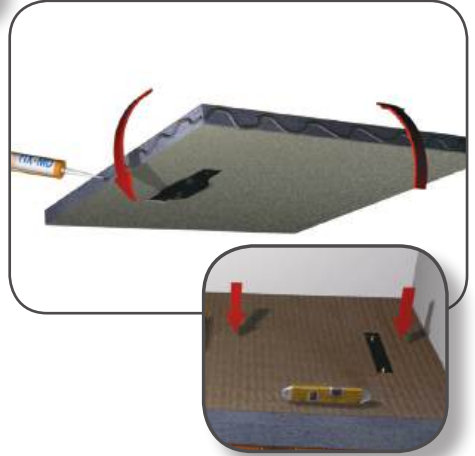
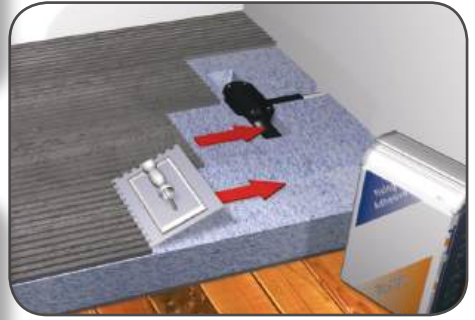
Note: All solvent joints should be cleaned with an appropriate solvent weld cleaner prior to using solvent adhesive.

The waste has two outlets for multi direction waste flow. The outlet running at a ninety degree angle from the waste has a zero degree fall; this is to facilitate the fitting of the vertical waste elbow. If you plan to run the waste horizontally from this outlet you **MUST** fit the angled coupler supplied with the linear drain to achieve the required waste fall. Clean with Spread solvent weld adhesive around the outside of the coupler and push into the linear drain outlet with a twisting action, ensuring that the coupler is fit with the fall in the correct orientation by ensuring that the angled coupler is fitted with the 'up' text facing upwards.

IMPORTANT: As the drain has two outlets, it is important that the outlet not being used is capped off using the stop end supplied. Spread solvent weld adhesive around the outside of the stop end and push into the linear drain outlet with a twisting action.

The linear drain is also supplied with a 2" to 1 1/2" reducer for instances where you need to reduce to 1 1/2" waste pipe. Spread solvent weld adhesive around the outside of the reducer and push into the remaining linear drain outlet with a twisting action. If you have 2" waste pipe this part can be discarded and simply fit your waste pipe to the linear drain using solvent waste adhesive in the same manner as above. Once any solvent welds have set, pour water down the drain to check that the waste is not blocked and that there are no leaks.

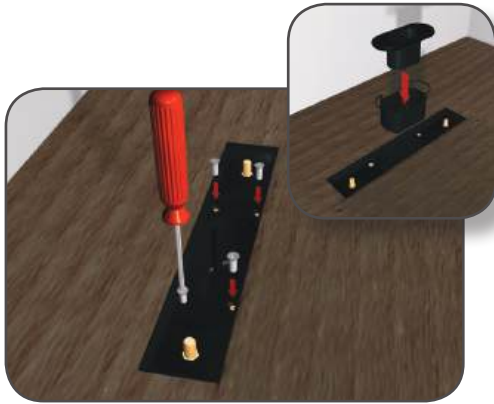
Note: The typical linear drain flow rate figure (42L/min) is based on using 2" waste pipe; by reducing the waste pipe diameter this will have an adverse affect on the flow rate achieved. For water to drain away properly, the waste pipe must have a fall of 3cm per metre.



Step 6

Spread Fix-KST adhesive across the surface of the Substrate Element using a notched adhesive trowel to leave just the right amount of adhesive on the shower base.

Apply a wavy line of Fix-MD adhesive across the edges of the shower tray base. Lower the shower tray onto the shower tray base and push firmly into position. Check with a level that the edges of the shower tray are level in both directions.



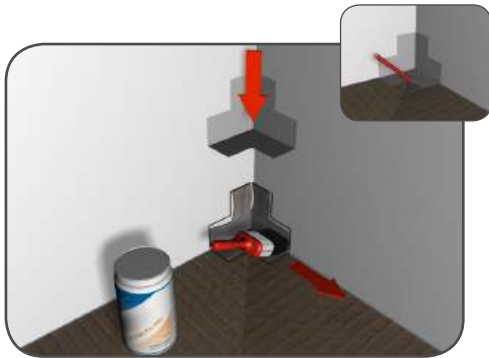
Step 7

Line up the linear drain bowl with the drain top pre-fitted within the shower tray and connect the two together using the four bolts provided and a suitable cross headed screwdriver. Ease the shower drain internal bowl into place then ease in the drain top as shown applying a little gentle pressure so that it seats correctly.



Step 8

From a roll of waterproofing tape cut to suit the width of the shower tray and the length of the shower tray.

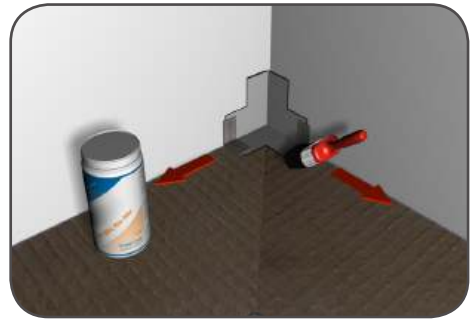


Step 9

Temporarily place a waterproofing internal corner into position and mark around it with a pencil. Once marked it can be removed. This is to show where you need to apply Pro-SEAL tape sealer. Repeat for any other corners.

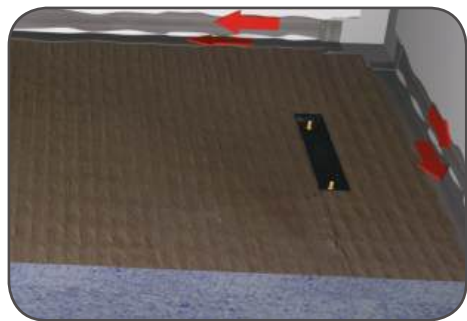
Put on the protective gloves and wear eye and breathing protection.

Using Pro-SEAL Pre-MIX tape sealer and a paintbrush, apply a thin layer of Pro-SEAL tape sealer to the internal corners of the shower tray, slightly bigger than the pencil line marked earlier.



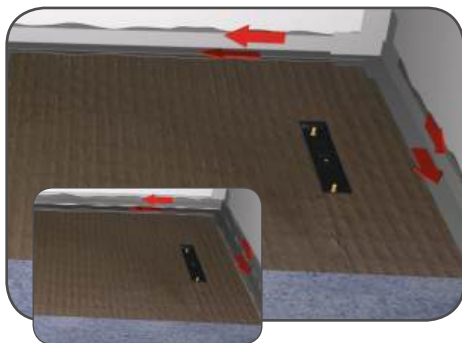
Step 10

Place the waterproofing internal corners into the internal corners of the shower tray and push firmly into the Pro-SEAL tape sealer. Apply a further thin layer of Pro-SEAL tape sealer over the edges of the waterproofing internal corners.



Step 11

Where the shower tray meets the wall apply a thin layer of Pro-SEAL tape sealer to the shower tray and the adjoining wall approximately 60mm wide on both.



Step 12

Place the strips of waterproofing tape previously cut in step 8 along the edges of the shower area, folding half up the wall and half on the shower tray as you go. Press firmly into the Pro-SEAL tape sealer and the tape should also overlap the waterproofing internal corners. When you have finished you can remove the protective gloves and eye and breathing protection.

Step 13

IMPORTANT! Apply a further thin layer of Pro-SEAL Tape Sealer over the tape & corners to fully impregnate the tape.

Step 14

Leave to set for approximately 12 hours after which the tray is ready for tiling. Steps 15, 16, 17 & 18 are after the Important Tiling Advice.

Important Tiling Advice

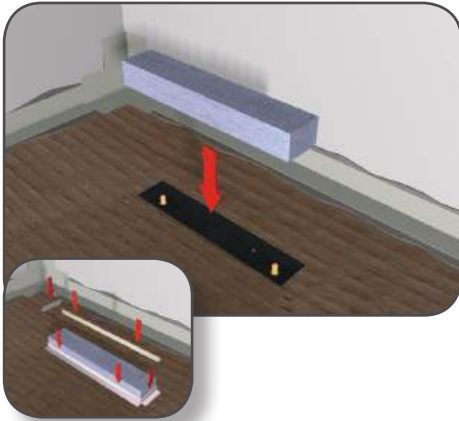
IT IS ESSENTIAL THAT YOU DO NOT USE A READY MIXED TILE ADHESIVE.

FLEXIBLE CEMENT BASED POWDERED ADHESIVE MUST BE USED WITH SHOWER CONCEPT TRAYS.

The shower tray has slopes towards the drain pre-formed into the tray and these must be maintained when tiling as does the slope on the shower tray extension.

If you use tiles that are larger than 100mm it is necessary to cut the tiles along the same lines as are pre-formed into the shower tray to maintain the slope. For best results and ease of installation we would recommend mosaics or tiles of 50mm to 100mm.

Elements shower trays are perfect for use with electrical under tile heating due to its excellent thermal properties. It is however essential that you check with the manufacturer that their product is entirely suitable for the area that you intend to install it in. If you are installing under tile heating it is essential that you consider any areas that will need products fixed to the floor for example shower screens. Avoid installing under tile heating directly below any fixing point to avoid the risk of screwing through the heating.



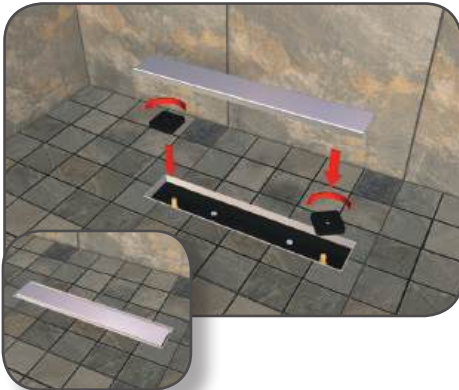
Step 15

Place the disposable tiling aid into the shower drain hole on the shower tray. The tiling aid provides the edge that needs to be tiled up to whilst protecting the drain from debris. At this stage we recommend fitting tile trim to create a clean finished edge for the waste cover.



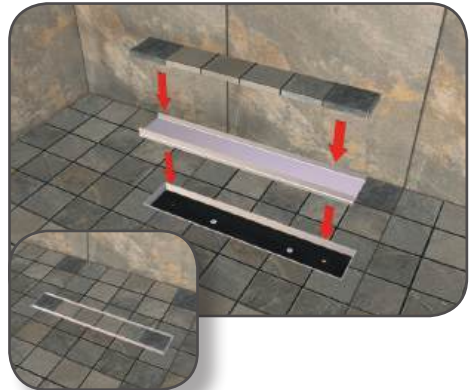
Step 16

After tiling the base of the shower area, we recommend that you add a further narrow border of tiles approximately 30mm to 40mm wide, along the top of the outside edge to act as a water retainer, stopping water running out of the shower area. The tiling aid can now be removed and disposed of.



Step 17

The linear drain is supplied with 2 No. square black plastic height adjustment nuts. Screw these on to the protruding bolts pre-fitted within the linear drain and adjust to suit your thickness of tile and adhesive. The drain should aim to be fitted flush with the finish tile.



Step 18

Various options are available to accessorise the linear drain including a tileable drain cover option and several finishes of toughened glass drain cover to give a more bespoke finish to your shower room. These are installed in the same way as above; just adjust the black plastic height adjustment nuts to suit. Leave for at least 24 hours before using the shower.