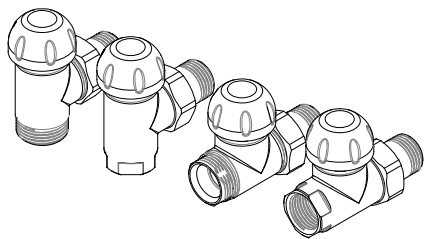


## VALVOLE PER RADIATORI RADIATOR VALVES



Valvole per radiatori, forma squadra o diritta.  
Modello termostaticabile e manuale. Attacco tubo rame, plastica o ferro.

### Caratteristiche tecniche

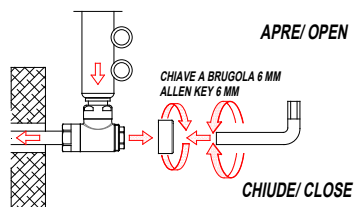
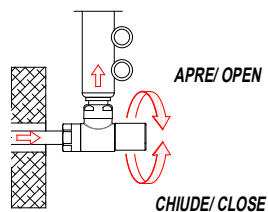
Max pressione statica di esercizio: 10 bar  
Max temperatura : 110°C  
Max pressione differenziale : 1 bar

Valves for radiators, angled or straight form.  
Thermostatic and manual models. Connections for copper, plastic or iron pipe.

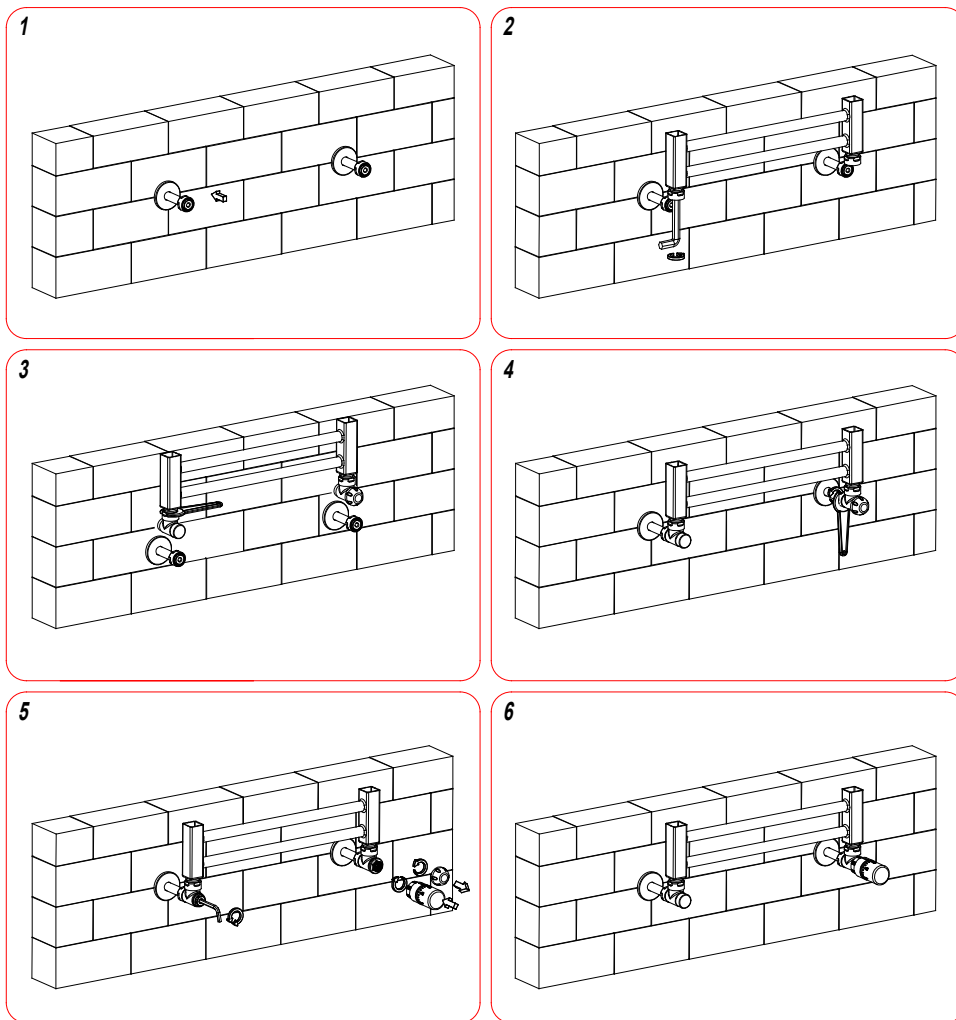
### Operating features

Max static operating pressure: 10 bar  
Max operating temperature: 110°C  
Max differential pressure: 1 bar

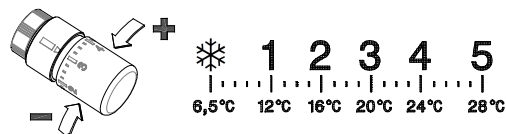
### REGOLAZIONE VALVOLA MANUALE MANUAL VALVE REGULATION



## INSTALLAZIONE INSTALATIONS

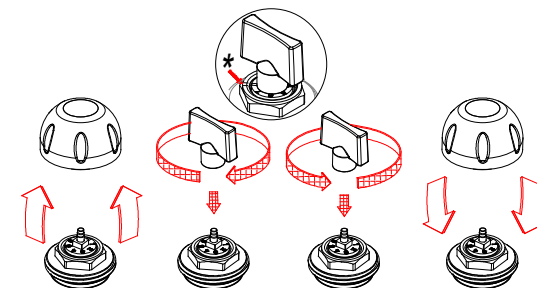


### REGOLAZIONE TESTA / HEAD REGULATION



## PREREGOLAZIONE PRESETTING

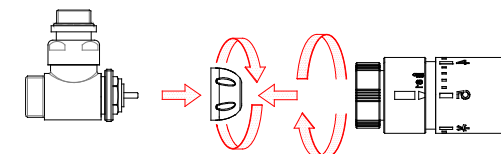
Solo per modelli con questa funzione / Only for models with this function



1. Togliere il cappuccio / Take off the cap;
2. Chiudere la ghiera di prerregolazione / Close presetting ring nut;
3. Aprire la ghiera e far coincidere l'indice con uno dei numeri / Open the ring and make the index coincide with one of the numbers;
4. Mettere il cappuccio / Install the cap.

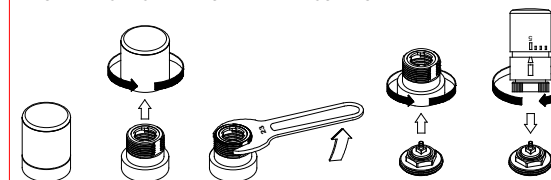
## TESTA TERMOSTATICA THERMOSTATIC HEAD

INSTALLAZIONE PER LE VALVOLE CON CAPPUCCIO  
INSTALLATION FOR VALVES WITH CAP



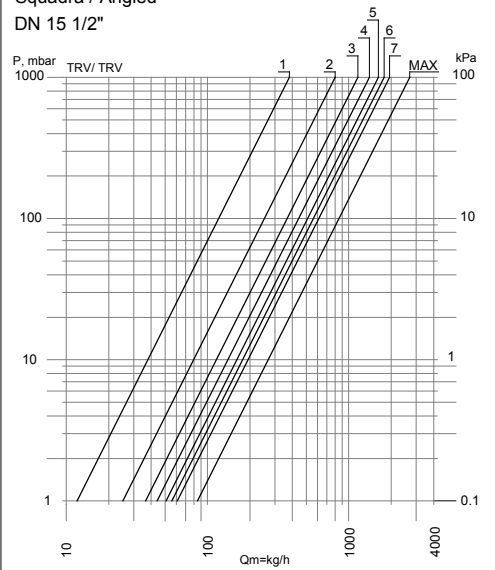
1. Togliere il cappuccio di protezione / Take off the protection cap;
2. Selezionare l'impostazione "5" sulla testa termostatica / Select setting "5" on the thermostatic head;
3. Installare la testa termostatica avvitando manualmente il dado ad anello / Install the thermostatic head by screwing the ring nut manually.

INSTALLAZIONE PER LE VALVOLE CON MANOPOLA TERMOSTATIZZABILE  
INSTALLATION FOR VALVES WITH THERMOSTATIC HANDWHEEL



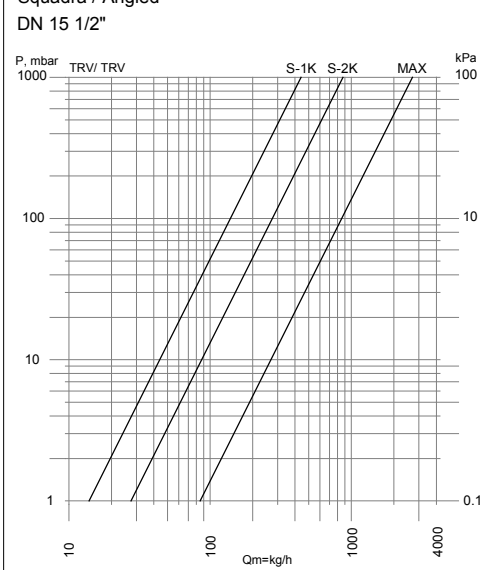
## VALVOLA A SQUADRA / ANGLED VALVE

Squadra / Angled  
DN 15 1/2"



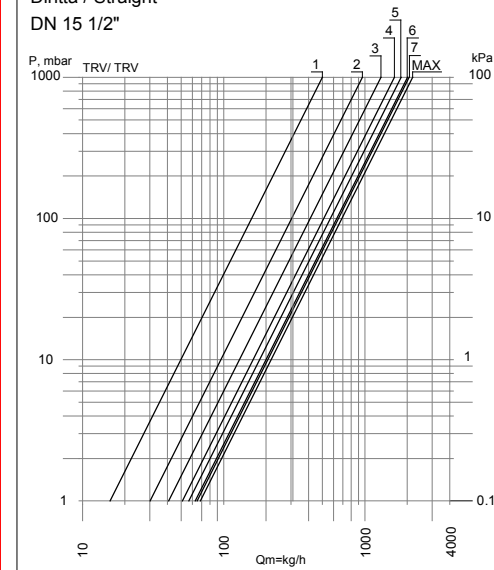
	1	2	3	4	5	6	7	MAX
KV	0.38	0.80	1.16	1.40	1.62	1.78	1.94	2.70

Squadra / Angled  
DN 15 1/2"



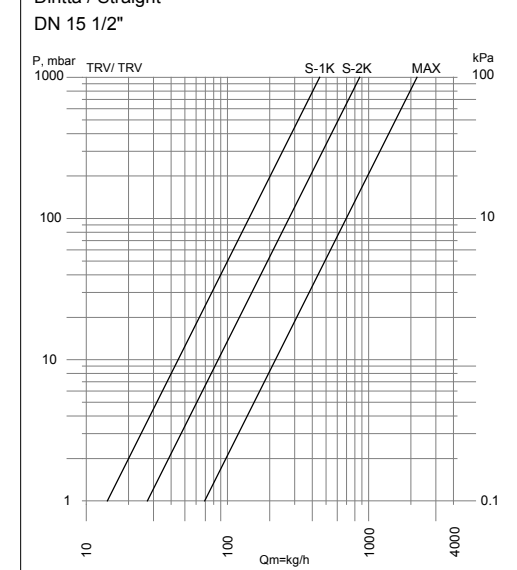
	S-1K	S-2K	MAX
KV	0.44	0.87	2.70

Diritta / Straight  
DN 15 1/2"



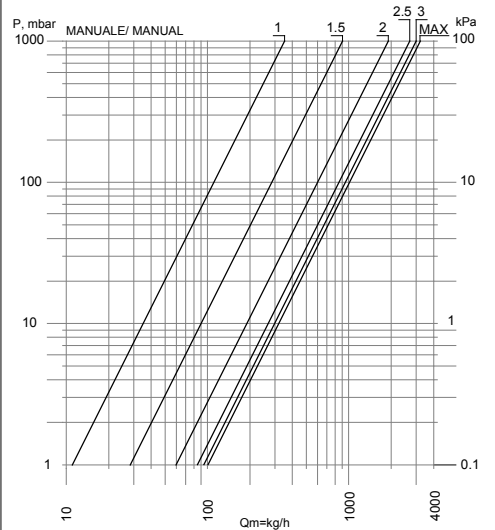
	1	2	3	4	5	6	7	MAX
KV	0.50	0.96	1.30	1.62	1.80	2.00	2.06	2.18

Diritta / Straight  
DN 15 1/2"



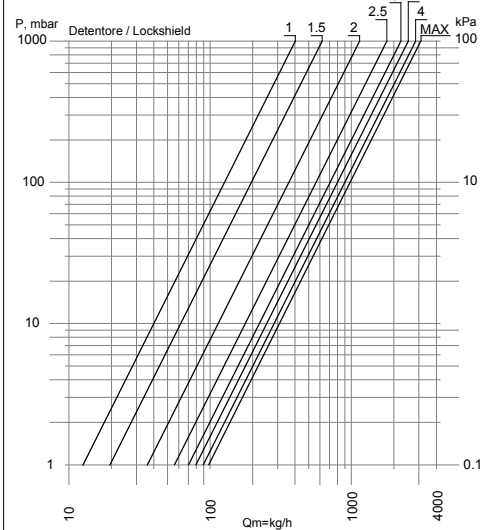
	S-1K	S-2K	MAX
KV	0.45	0.86	2.20

Squadra / Angled  
DN 15 1/2"



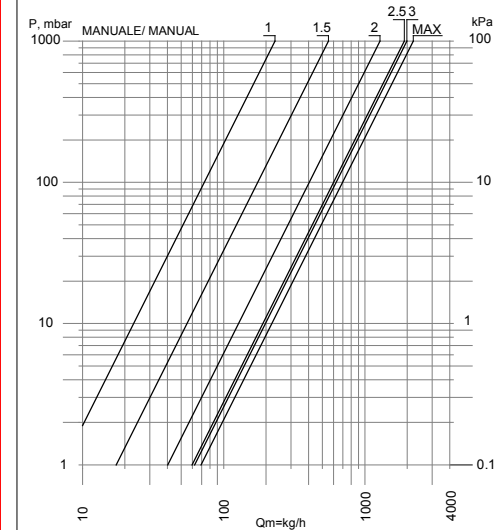
	1	1.5	2	2.5	3	MAX
KV	0.35	0.90	1.90	2.70	3.00	3.20

Squadra / Angled  
DN 15 1/2"



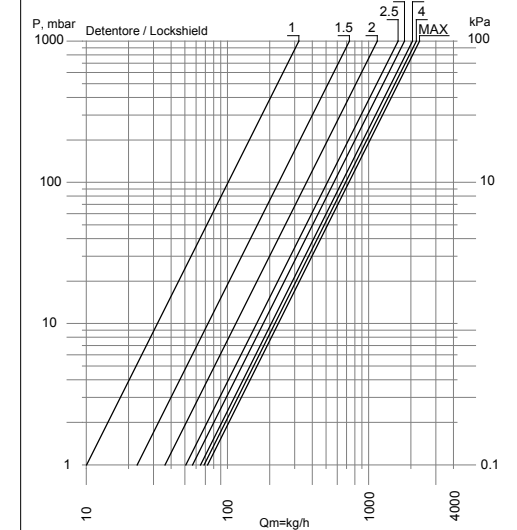
	1	1.5	2	2.5	3	3.5	4	MAX
KV	0.40	0.62	1.14	1.78	2.24	2.52	2.85	3.10

Diritta / Straight  
DN 15 1/2"



	1	1.5	2	2.5	3	MAX
KV	0.23	0.55	1.28	1.90	1.98	2.20

Diritta / Straight  
DN 15 1/2"



	1	1.5	2	2.5	3	3.5	4	MAX
KV	0.32	0.73	1.15	1.62	1.80	2.05	2.18	2.30